

RigExpert® Tokenblauser

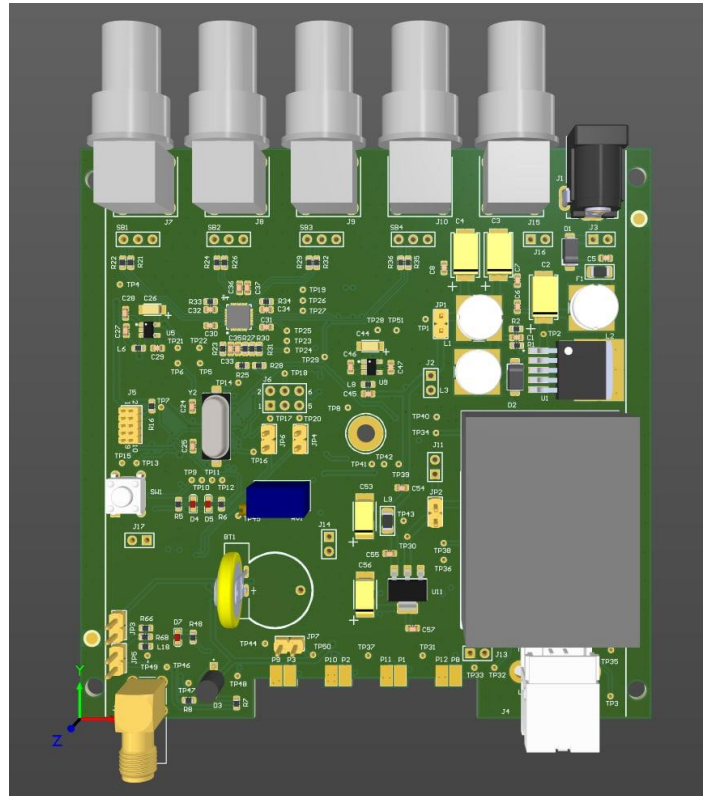
Low-noise, Quad Channel GPSDO

Applications

- Laboratory reference clock
- Driving PLLs in RF/microwave/satellite applications

Features

- Independent PLL-synthesized outputs
- Stand-alone or OEM applications
- Frequency control: from the LCD front panel or via USB connection to a PC
- User interface: 0.91" monochrome OLED; three front panel buttons
- Four memory profiles
- Possible modifications: connecting external OCXO, GNSS receiver, using complimentary outputs with LVPECL/LVDS/HVSL/CMOS/SSTL/HSTL levels, etc.; no programming skills are required
- Source code and schematics are available for deeper modifications



Specifications

Number of PLL synthesized outputs	4
Output frequency range	0.16 to 200/350/710 MHz (depending on a PLL type)
Frequency setting	With 1 Hz steps (or very fine tuning with 1 ppt steps)
Auxiliary output	10 MHz
Frequency stability	0.001 ppm or better
Signal levels	3.3V CMOS logic
Output connectors	BNC
GNSS antenna type	External, active, 3.3V
GNSS constellations	GPS, Galileo
Dimensions	105mm x 105mm x 35mm (enclosure) 100mm x 100mm x 25mm (PCB)

Front & Rear Panels

